

Installation Instructions LED Downlight Series

Product Range

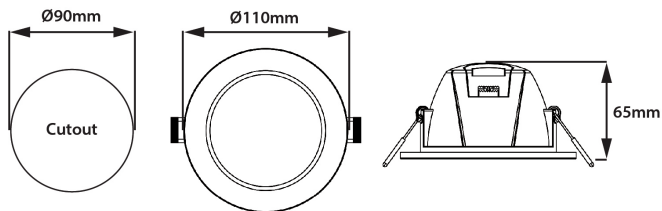
SCDL - 9W LED Downlight, Dimmable, Colour Selectable

SCDLWW - 9W LED Downlight, Dimmable, Warm White

SCDLCW - 9W LED Downlight, Dimmable, Cool White

Product Specification

| Part Code | SCDL | SCDLWW | SCDLCW |
|---------------------|-------------------------|--------|--------|
| Colour Temp | 3000K 4000K 6000K | 3000K | 4000K |
| Lumen Output | >750lm | 700lm | 750lm |
| IP Rating | IP44 (from front only) | | |
| Power | 9W | | |
| Beam Angle | 100° | | |
| CRI | >80 | | |
| Voltage Rating | 240V~ 50Hz | | |
| LED Lamp Life (L70) | 30,000 Hrs | | |
| Dimmable | Yes | | |
| Operating Temp | -10°C to 40°C | | |
| Electrical Class | Class II | | |



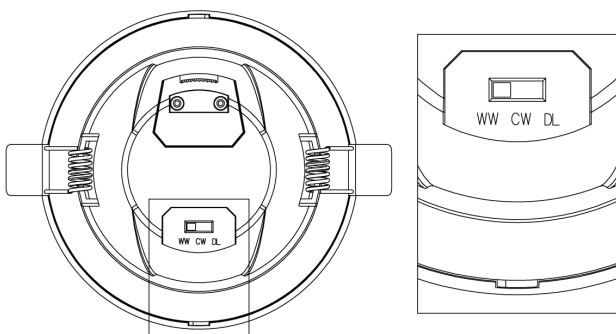
Pre-Installation Options

Colour Temperature Selection - SCDL model only

This model allows the installer to select between three colour temperature outputs.

Adjust the selector switch to the required output position.

| Warm White (WW) | Cool White (CW) | Day Light (DL) |
|-----------------|-----------------|----------------|
| 3000k | 4000k | 6000k |



Shell Changeable - All Models

All Scorpion models allow the installer to replace the standard white shell (trim).

Two coloured shells are available (sold separately).

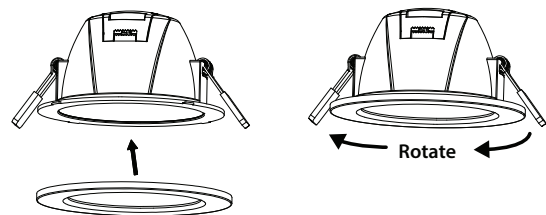
Rotate the shell anti-clockwise to release the locking mechanism to remove white shell.

Place the selected coloured shell and rotate clockwise to lock.

Shell Product Codes

SCDLSSV- Silver

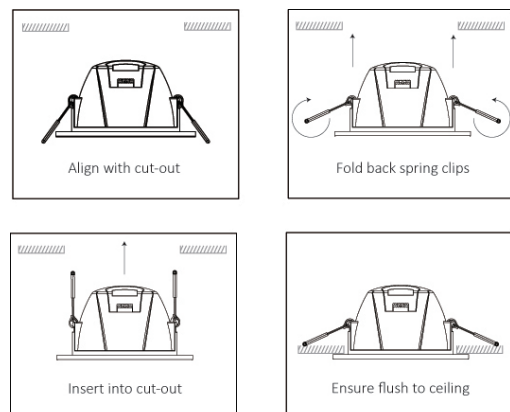
SCDLSBK- Black



Installation Method

Read instructions and check you have all the tools and accessories to complete the installation correctly.

1. Isolate the mains power supply before starting installation.
2. Cut 90mm aperture in the ceiling.
3. With the power turned off, make electrical connections. Pass mains plug through ceiling aperture and plug into socket in the ceiling place.
4. Holding the luminaire level with front facing down, push the spring clips upwards and fit luminaire into the cut-out. Ensure the supply cables are dressed away from the fixings and ensure the luminaire is pressed carefully into the ceiling.
5. When the luminaire is half way into the ceiling, release the springs. The luminaire should then hold itself firm. Press luminaire firmly into place. The product should be installed flush to the ceiling surface.
6. Restore the power supply, switch on and test for the correct operation.



Installation Instructions LED Downlight Series

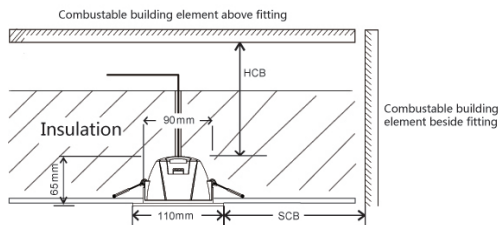
Clearances

Can be Covered and Abutted



IC-4 Rated

These luminaires comply with AS/NZS 69598.2.2. They are approved the luminaire will not exceed 90°C when side abut or covered with insulation. Building insulation used to abut and cover the luminaire must be a type that can maintain it's dimensions and structural integrity when exposed to maximum surface temperature of the class luminaire, being 90°C and must withstand a 30s needle flame test carried out in accordance with AS/NZS 60695.11.5 with the flame applied to all surfaces of the sample.



Risk of Fire

Required clearance from structural members and building elements

| | |
|----------|----------|
| HCB: 0mm | MIC: 0mm |
| SCB: 0mm | SCI: 0mm |

HCB = Minimum distance between the top of the recessed luminaire and any building element above it.

MIC = Minimum distance between the top of the recessed luminaire and the building insulation above it.

SCB = Minimum distance between the side of the recessed luminaire and any building element.

SCI = Minimum distance between the recessed luminaire and any building insulation.

Dimming

The Scorpion Downlights have been designed for optimum performance with our Dimpala range of dimmers.

Dimpala Product Codes

DIMR - Dimpala Universal Eclipse Dimmer

DIMPRX - Dimpala Push Rotary Dimmer No Glow

DIMPR - Dimpala Push Rotary Dimmer

Please refer to our Website or Catalogue for further detail and accessories

Note: In some regions a slight flicker may occur when the luminaire is dimmed. This could be due to power line signals sent by electricity supply utilities. This effect is not a malfunction of the luminaire or dimmer but could be a result of local power supply changes. If this occurs at any stage adjusting the dimmer back to maximum output should minimise the effect.

Important Information

It is recommend that luminaires be installed and fitted by a qualified electrician, ensuring the installation complies to the current building regulations. These products are designed for connection to a 220-240V~50Hz supply.

Trader will not accept responsibility for any claims arising from incorrect installation or application.

If cleaning is necessary, ensure product is switched off and only wipe the accessible lens and shells with a damp cloth and dry off using a dry lint free cloth.

Warning

Caution no user serviceable parts contained, risk of electric shock if dismantled. Cutting cables or damaging components will void warranty.

Check whether the product has been damaged in transport. Do not operate or install any product which appears damaged in any way. Return the complete product to place of purchase for inspection or replacement.

Warranty

This product has been manufactured to the highest quality standards. This product is warranted to the original purchaser and is not transferable.

The product is guaranteed to be free from defects in workmanship and parts for a period of 5 Years from the date of purchase, for full warranty detail please refer to www.gsme.com.au



GSM Electrical (Australia) Pty Ltd

Level 2 142-144 Fullarton Road, Rose Park SA, 5067

P: 1300 301 838 F: 1300 301 778 E: service@gsme.com.au

www.gsme.com.au