



Surface Mounting Box Enclosure

With 20mm/25mm End Entries

Designed to suit most installs
with both 20mm and 25mm end entries.
Two-in-one solution.



100 Years of Gerard Electrical Tradition

Order Code
HYSMB2025

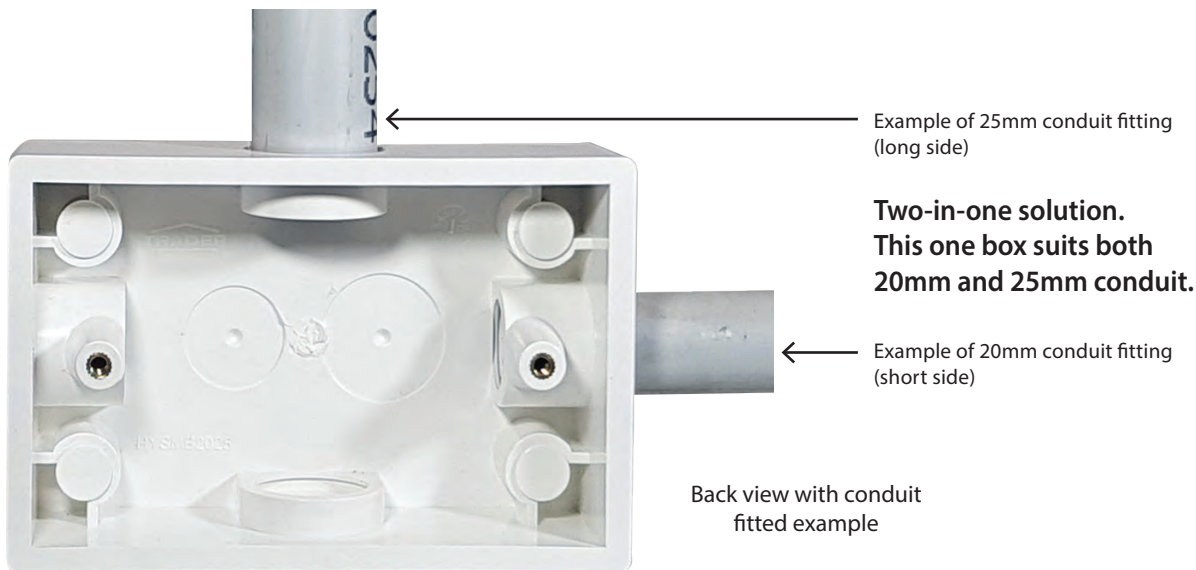
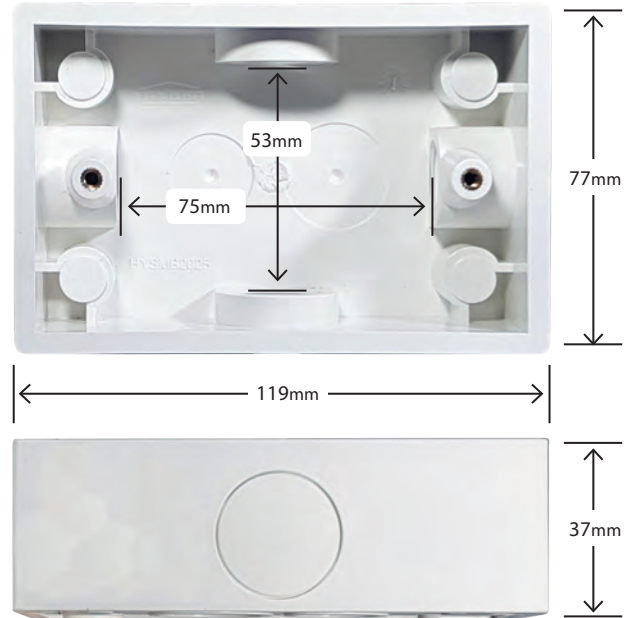


Available Now through your Electrical Wholesaler

Another range extension from Trader, Hyena Surface Mounting Box Enclosure with 20mm/25mm End Entries, are ready for use by the Australian Electrical Contractor.

This two-in-one box has the capabilities to be used with 20mm or 25mm conduit - or both.

- Made from impact modified UV stablized PVC
- Entries 2 x 25mm (long sides) and 2 x 20mm (short sides)
- Rear drill entries for 20mm and 25mm
- Suitable for single gang size plates
- 84mm mounting holes (short screws provided)
- Comes with caps and plugs pack for entries
- Overall dimensions (length 119mm x width 77mm x depth 37mm)
- Internal depth 32.5mm



Cross Reference Chart - Similar Products

Trader	Clipsal*	PDL*
HYSMB2025	238 238/25	89DI



*Clipsal and PDL are trademarks of Schneider Electric Pty Ltd