



100 Years of Gerard Electrical Tradition



# WOLVERINE

## CIRCUIT PROTECTION

CALL  
1300 301 838

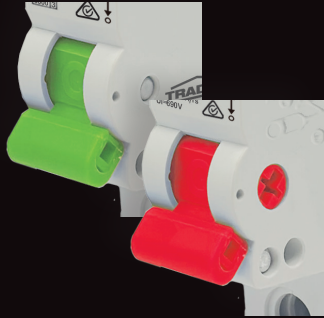
WWW  
[gsme.com.au](http://gsme.com.au)

EMAIL  
[service@gsme.com.au](mailto:service@gsme.com.au)



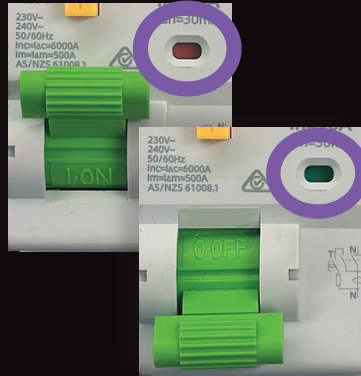
# WOLVERINE

## DISTINCTIVELY WOLVERINE



### COLOUR CODED TOGGLES

Easy to identify Main Switches, RCD, MCB & RCBO devices



### STATUS INDICATION

Instantly recognisable:  
Green = OFF, Red = ON



### LINE OR LOAD

Can be wired top or bottom



### QR CODE

Scan QR code on each product to view installation instructions



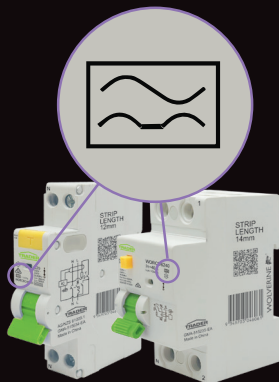
### MCB/MAIN SWITCH COMBO

63A MCB circuit breaker with Red toggle, suitable for use as Main Switch



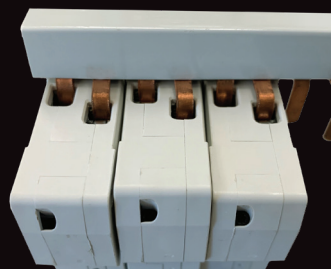
### BREAKING CAPACITY

MCB - 6kA,  
RCBO - 4.5kA and 6kA



### RCBO TYPE A

Sensitive to sinusoidal and unidirectional currents, present in electronic devices



### FITS COMMON BUSBAR ARRANGEMENTS

Single pole, 1P+N and 3 pole installations



### RCBO WITH NEUTRAL TAIL

For easier installation on common busbars

# WOLVERINE

## INDOOR SWITCHBOARDS



### WOLVERINE SWITCHBOARDS

12, 18 & 24 Module Designs



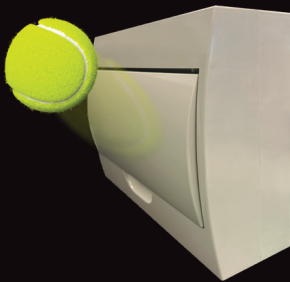
### COMPACT HINGE DOOR DESIGN

Easy to access



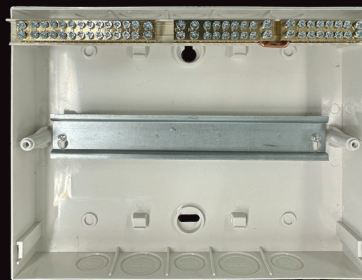
### IP40 RATING STANDS FROM THE FRONT

Insect and object resistant



### IMPACT PROTECTION IK05

Stands up to household use



### NEUTRAL LINK RATING: 100A

Suits residential installations



### PARTS PACK

Includes 80A rated busbar, labels & pole fillers



### 100A RATED ASSEMBLY

Neutral and Earth bars with double rows of screws, secure installs



### CABLE ENTRIES TOP AND BOTTOM

Ample access points



### CHOICE OF MOUNTING OPTIONS

Suits plaster board or solid brick



Data Spec  
Sheets



See Trade  
Prices



Wolverine MCBs are available in C curve tripping characteristic and ideal for applications for the protection of resistive and inductive loads with low inrush current. Suitable for protecting distribution lines, lighting lines and motor circuits with high connecting currents, equipment in office and residential buildings. **63AMP MODELS MARKED WITH “R” (INDICATING RED TOGGLE) IN THE CATALOGUE NUMBER** are configured for MCB/Main Switch applications. Available in 1 pole and 3 pole. Complies with AS/NZS and IEC 60898-1.

Miniature Circuit Breakers (MCB) Series		Qty Per Box
WOMCB6102 <i>*MX9MC102</i>	MCB Miniature Circuit Breaker 6kA 1 Pole 2 Amp C Curve 230V 240V ac 1 Module	12
WOMCB6106 Cross ref N/A	MCB Miniature Circuit Breaker 6kA 1 Pole 06 Amp C Curve 230V 240V ac 1 Module	12
WOMCB6110 <i>*MX9MC110</i> <i>^MOD6110</i> <i>†MSN110</i>	MCB Miniature Circuit Breaker 6kA 1 Pole 10 Amp C Curve 230V 240V ac 1 Module	12
WOMCB6116 <i>*MX9MC116</i> <i>^MOD6116</i> <i>†MSN116</i>	MCB Miniature Circuit Breaker 6kA 1 Pole 16 Amp C Curve 230V 240V ac 1 Module	12
WOMCB6120 <i>*MX9MC120</i> <i>^MOD6120</i> <i>†MSN120</i>	MCB Miniature Circuit Breaker 6kA 1 Pole 20 Amp C Curve 230V 240V ac 1 Module	12
WOMCB6125 <i>*MX9MC125</i> <i>^MOD6125</i> <i>†MSN125</i>	MCB Miniature Circuit Breaker 6kA 1 Pole 25 Amp C Curve 230V 240V ac 1 Module	12
WOMCB6132 <i>*MX9MC132</i> <i>^MOD6132</i> <i>†MSN132</i>	MCB Miniature Circuit Breaker 6kA 1 Pole 32 Amp C Curve 230V 240V ac 1 Module	12
WOMCB6132R Cross ref N/A <b>RED TOGGLE</b>	MCB Miniature Circuit Breaker 6kA 1 Pole 32 Amp C Curve 230V 240V ac 1 Module <b>Main Switch Suitable</b>	12
WOMCB6140 <i>*MX9MC140</i> <i>^MOD6140</i> <i>†MSN140</i>	MCB Miniature Circuit Breaker 6kA 1 Pole 40 Amp C Curve 230V 240V ac 1 Module	12
WOMCB6140R Cross ref N/A <b>RED TOGGLE</b>	MCB Miniature Circuit Breaker 6kA 1 Pole 40 Amp C Curve 230V 240V ac 1 Module <b>Main Switch Suitable</b>	12
WOMCB6150 <i>*MX9MC150</i> <i>^MOD6150</i> <i>†MSN150</i>	MCB Miniature Circuit Breaker 6kA 1 Pole 50 Amp C Curve 230V 240V ac 1 Module	12
WOMCB6150R <i>*Cross ref N/A</i> <b>RED TOGGLE</b>	MCB Miniature Circuit Breaker 6kA 1 Pole 50 Amp C Curve 230V 240V ac 1 Module <b>Main Switch Suitable</b>	12
WOMCB6163 <i>*MX9MC163</i> <i>^MOD6163</i> <i>†MSN163</i>	MCB Miniature Circuit Breaker 6kA 1 Pole 63 Amp C Curve 230V 240V ac 1 Module	12
WOMCB6163R <i>*MX9MC163R</i> <i>†MSN163R</i> <b>RED TOGGLE</b>	MCB Miniature Circuit Breaker 6kA 1 Pole 63 Amp C Curve 230V 240V ac 1 Module <b>Main Switch Suitable</b>	12



Miniature Circuit Breakers (MCB) Series		Qty Per Box
<b>WOMCB6310</b> *MX9MC310 ^MOD6310 †MSN310	MCB Miniature Circuit Breaker 6kA 3 Pole 10 Amp C Curve 400V 415V ac 3 Module	4
<b>WOMCB6316</b> *MX9MC316 ^MOD6316 †MSN316	MCB Miniature Circuit Breaker 6kA 3 Pole 16 Amp C Curve 400V 415V ac 3 Module	4
<b>WOMCB6320</b> *MX9MC320 ^MOD6320 †MSN320	MCB Miniature Circuit Breaker 6kA 3 Pole 20 Amp C Curve 400V 415V ac 3 Module	4
<b>WOMCB6325</b> *MX9MC325 ^MOD6325 †MSN325	MCB Miniature Circuit Breaker 6kA 3 Pole 25 Amp C Curve 400V 415V ac 3 Module	4
<b>WOMCB6332</b> *MX9MC332 ^MOD6332 †MSN332	MCB Miniature Circuit Breaker 6kA 3 Pole 32 Amp C Curve 400V 415V ac 3 Module	4
<b>WOMCB6332R</b> Cross ref N/A RED TOGGLE	MCB Miniature Circuit Breaker 6kA 3 Pole 32 Amp C Curve 400V 415V ac 3 Module <b>Main Switch Suitable</b>	4
<b>WOMCB6340</b> *MX9MC340 ^MOD6340 †MSN340	MCB Miniature Circuit Breaker 6kA 3 Pole 40 Amp C Curve 400V 415V ac 3 Module	4
<b>WOMCB6340R</b> Cross ref N/A RED TOGGLE	MCB Miniature Circuit Breaker 6kA 3 Pole 40 Amp C Curve 400V 415V ac 3 Module <b>Main Switch Suitable</b>	4
<b>WOMCB6350</b> *MX9MC350 ^MOD6350 †MSN350	MCB Miniature Circuit Breaker 6kA 3 Pole 50 Amp C Curve 400V 415V ac 3 Module	4
<b>WOMCB6350R</b> Cross ref N/A RED TOGGLE	MCB Miniature Circuit Breaker 6kA 3 Pole 50 Amp C Curve 400V 415V ac 3 Module <b>Main Switch Suitable</b>	4
<b>WOMCB6363</b> *MX9MC363 ^MOD6363 †MSN363	MCB Miniature Circuit Breaker 6kA 3 Pole 63 Amp C Curve 400V 415V ac 3 Module	4
<b>WOMCB6363R</b> *MX9MC363R †MSN363R RED TOGGLE	MCB Miniature Circuit Breaker 6kA 3 Pole 63 Amp C Curve 400V 415V ac 3 Module <b>Main Switch Suitable</b>	4



Wolverine DIN Rail mounted RCBOs (WORCBO series) offer personal and equipment protection applications in domestic and small commercial environments as well as circuit protection up to 6kA. The Compact SLIM module design, allows for more RCDs/MCBs to be installed in the one enclosure. The range enables true Double Pole Disconnection in a Single Module RCBO. Complies with AS/NZS 61009-1 and IEC 61009-1.

RCBO Series Type A RCBO 4.5kA		Qty Per Box
WORCBO45110 <i>*RCBE210/30S</i>	RCBO Residual Current Breaker with Overcurrent Protection 4.5kA 2 Pole 10A 230 240V ac 30mA Type A 1 Module Wide	10
WORCBO45116 <i>*RCBE216/30S</i>	RCBO Residual Current Breaker with Overcurrent Protection 4.5kA 2 Pole 16A 230 240V ac 30mA Type A 1 Module Wide	10
WORCBO45120 <i>*RCBE220/30S</i>	RCBO Residual Current Breaker with Overcurrent Protection 4.5kA 2 Pole 20A 230 240V ac 30mA Type A 1 Module Wide	10
WORCBO45125 <i>*RCBE225/30S</i>	RCBO Residual Current Breaker with Overcurrent Protection 4.5kA 2 Pole 25A 230 240V ac 30mA Type A 1 Module Wide	10
WORCBO45132 <i>*RCBE232/30S</i>	RCBO Residual Current Breaker with Overcurrent Protection 4.5kA 2 Pole 32A 230 240V ac 30mA Type A 1 Module Wide	10



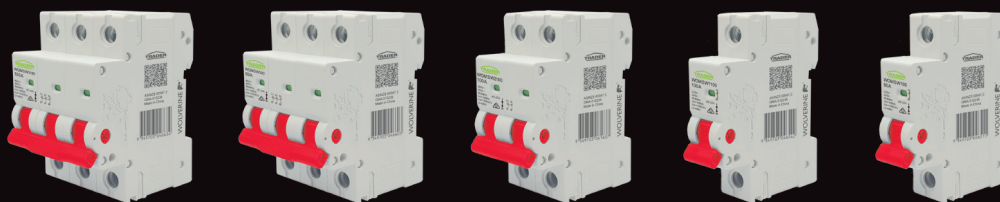
**RCBO with neutral tails pre-wired into the active terminal  
for faster switchboard installs.**

Tails can be trimmed, stripped and crimped to save space.

RCBOs are also Double Pole switched for complete isolation of faulty circuits.



RCBO Series Type A RCBO 6kA		Qty Per Box
WORCBO6106	RCBO Residual Current Breaker with Overcurrent Protection 6kA 2 Pole 6A 230 240V ac 30mA Type A 1 Module Wide	10
WORCBO6106T † ADC906T INCLUDES NEUTRAL TAIL	RCBO Residual Current Breaker with Overcurrent Protection 6kA 2 Pole 6A 230 240V ac 30mA Type A 1 Module Wide with Neutral Tail	6
WORCBO6110 *MX9R3110 ^M6RCBD1030CAN † ADC910T	RCBO Residual Current Breaker with Overcurrent Protection 6kA 2 Pole 10A 230 240V ac 30mA Type A 1 Module Wide	10
WORCBO6110T ^MOD6RCBO11030A † ADC910T INCLUDES NEUTRAL TAIL	RCBO Residual Current Breaker with Overcurrent Protection 6kA 2 Pole 10A 230 240V ac 30mA Type A 1 Module Wide with Neutral Tail	6
WORCBO6116 *MX9R3116 ^M6RCBD1630CAN † ADC916T	RCBO Residual Current Breaker with Overcurrent Protection 6kA 2 Pole 16A 230 240V ac 30mA Type A 1 Module Wide	10
WORCBO6116T ^ MOD6RCBO11630A † ADC916T INCLUDES NEUTRAL TAIL	RCBO Residual Current Breaker with Overcurrent Protection 6kA 2 Pole 16A 230 240V ac 30mA Type A 1 Module Wide with Neutral Tail	6
WORCBO6120 *MX9R3120 ^M6RCBD2030CAN † ADC920T	RCBO Residual Current Breaker with Overcurrent Protection 6kA 2 Pole 20A 230 240V ac 30mA Type A 1 Module Wide	10
WORCBO6120T ^MOD6RCBO12030A † ADC920T INCLUDES NEUTRAL TAIL	RCBO Residual Current Breaker with Overcurrent Protection 6kA 2 Pole 20A 230 240V ac 30mA Type A 1 Module Wide with Neutral Tail	6
WORCBO6125 *MX9R3125 ^M6RCBD2530CAN † ADC925T	RCBO Residual Current Breaker with Overcurrent Protection 6kA 2 Pole 25A 230 240V ac 30mA Type A 1 Module Wide	10
WORCBO6125T ^MOD6RCBO12530A † ADC925T INCLUDES NEUTRAL TAIL	RCBO Residual Current Breaker with Overcurrent Protection 6kA 2 Pole 25A 230 240V ac 30mA Type A 1 Module Wide with Neutral Tail	6
WORCBO6132 *MX9R3132 ^M6RCBD3230CAN † ADC932T	RCBO Residual Current Breaker with Overcurrent Protection 6kA 2 Pole 32A 230 240V ac 30mA Type A 1 Module Wide	10
WORCBO6132T ^MOD6RCBO13230A † ADC932T INCLUDES NEUTRAL TAIL	RCBO Residual Current Breaker with Overcurrent Protection 6kA 2 Pole 32A 230 240V ac 30mA Type A 1 Module Wide with Neutral Tail	6



Wolverine DIN Rail mounted Main Switch Isolators (WOMSW Series) are suited to board configurations up to 100A. Red switch toggles enable easy identification along with the green/red indication of internal contact positions. Ideal for applications where isolation is required either in the main or in local sub boards. Please note: WOMSW are only switches and do not operate to provide additional circuit protection.

Main Switch Series		Qty Per Box
WOMSW180 ^MOD6MS180	Main Switch 1 Pole 80A 230V 240V ac 1 Module	12
WOMSW1100 *MX9MS1100 ^MOD6MS1100	Main Switch 1 Pole 100A 230V 240V ac 1 Module	12
WOMSW2100 ^MOD6MS210	Main Switch 2 Pole 100A 400V 415V ac 2 Module	6
WOMSW380 ^MOD6MS380	Main Switch 3 Pole 80A 400V 415V ac 3 Module	4
WOMSW3100 *MX9MS3100 ^MOD6MS3100	Main Switch 3 Pole 100A 400V 415V ac 3 Module	4

## RESIDUAL CURRENT DEVICES



Wolverine DIN Rail mounted RCDs (WORCD Series) ensures both personal and equipment protection in domestic and small commercial environments. Installation features include easy-to-use terminals, DIN rail assembly and U-style busbar suitability. Type A sensing is ideal for general everyday protection and available in 30mA operating current. Sensitive to both sinusoidal and unidirectional pulsed currents which may be present in modern electrical systems with electronic devices. Complies with AS/NZS and IEC 61008-1.

RCD Series Type A		Qty Per Box
WORCD6220 *MX9RC220 ^MOD6RCCB22030A †CDA220T	RCD Residual Current Device 6kA 2 Pole 20 Amp 230V 240V ac 30mA Type A 2 Module	6
WORCD6240 *MX9RC240 ^MOD6RCCB24030A †CDA240T	RCD Residual Current Device 6kA 2 Pole 40 Amp 230V 240V ac 30mA Type A 2 Module	6
WORCD6263 *MX9RC263 ^MOD6RCCB26330A †CDA463T	RCD Residual Current Device 6kA 2 Pole 63 Amp 230V 240V ac 30mA Type A 2 Module	6
WORCD6420 *MX9RC420 ^MOD6RCCB42030A †CDA420T	RCD Residual Current Device 6kA 4 Pole 40 Amp 400V 415V ac 30mA Type A 4 Module	3
WORCD6440 *MX9RC440 ^MOD6RCCB4030A †CDA440T	RCD Residual Current Device 6kA 4 Pole 40 Amp 400V 415V ac 30mA Type A 4 Module	3
WORCD6463 *MX9RC463 ^MOD6RCCB46330A †CDA463T	RCD Residual Current Device 6kA 4 Pole 63 Amp 400V 415V ac 30mA Type A 4 Module	3





Purpose built for our circuit protection range, Wolverine switchboards deliver class leading protection and great features for your next resi install. Designed for indoor use, choose between 12, 18 & 24 module designs that are IK05 impact resistant and IP40 rated (from the front). Each board has a 100A rated assembly, neutral link and parts pack with 80A rated busbar, labels and pole fillers.

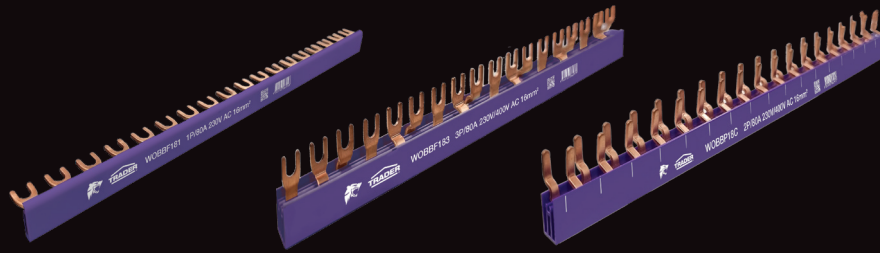
Surface Mount Indoor Switchboards		Qty Per Box
WOSB12	Switchboard Surface Mount 12 Way 100A 415V IP40 with White Door for Indoor Use	1
WOSB18	Switchboard Surface Mount 18 Way 100A 415V IP40 with White Door for Indoor Use	1
WOSB24	Switchboard Surface Mount 24 Way 100A 415V IP40 with White Door for Indoor Use	1

## OUTDOOR SWITCHBOARDS

**FUTURE RELEASE**

Designed to withstand the rigours of the Australian climate, Wolverine outdoor switchboards are rated IP65 to provide years of safe operation. Options include 12, 18 and 24 module configurations rated to 100A. Enclosures are made from UV resistant, polycarbonate construction and high quality gaskets to resist impact and prevent water, dust and insect ingress.

Surface Mount Indoor Switchboards		Qty Per Box
WOSBWP6	Switchboard Surface Mount Weatherproof 6 way 100A 415V IP65 With Grey Transparent Door for Outdoor Use	1
WOSBWP12	Switchboard Surface Mount Weatherproof 12 way 100A 415V IP65 With Grey Transparent Door for Outdoor Us	1
WOSBWP18	Switchboard Surface Mount Weatherproof 18 way 100A 415V IP65 With Grey Transparent Door for Outdoor Us	1



Cut down your wiring time and eliminate potential loose wire hazards with the Wolverine busbar range. Available in a choice of 18 module insulated pin and insulated fork designs in 18 module configuration make your next switchboard install faster and more efficient. One and three pole busbars incorporate a stepped design to suit Wolverine terminals.

Main Switch Series		Qty Per Box
WOBBP18C	Busbar Insulated Pin 80 Amp 2 Pole 18 Module Combo Active Plus Neutral Purple	15
WOBBF181	Busbar Insulated Fork 80 Amp 1 Pole 18 Module Purple	35
WOBBF183	Busbar Insulated Fork 80 Amp 3 Pole 18 Module Purple	15

## AUTO-SWITCHED SOCKET



Plug into mains power directly from the switchboard with Wolverine DIN mounted sockets. These shuttered sockets suit 3 pin plugs for either 10A or 15A 250V ac rating and provides a reliable and secure connection for your electrical devices. The DIN Socket Outlets have double pole construction which incorporates auto switching across active and neutral contacts, making them versatile for applications such as worksites in temporary boards and portable generators.

RCD Series Type A		Qty Per Box
WOSOAUDP10	Socket DIN Rail Mounted Auto-Switched Double Pole 10A 250V 3 Flat Pin	5
WOSOAUDP15	Socket DIN Rail Mounted Auto-Switched Double Pole 15A 250V 3 Flat Pin	5



## WONBPM7

Neutral Bar Panel Mount 7 Hole with Insulating Cover

WO Wolverine NB Neutral Bar PM Panel Mount 7 7 Hole

4 x Ø 6.3mm Tunnel	3 x Ø 4.6mm Tunnel	500V~ 110A	10 Per Box	10 boxes x 10 items 100 Per Carton
-----------------------	-----------------------	------------	---------------	--

\*Clipsal L7

## WOLVERINE EQUIVALENT CROSS REFERENCE CHARTS

TRADER	*Clipsal	^NHP	†Hager	TRADER	*Clipsal	^NHP	†Hager
Wolverine				Wolverine			
WOMCB6102	MX9MC102	Nil	Nil	WORCB06106	MX9R306	M6RCBD50630CAN	-
WOMCB6106	MX9MC106	MOD6106	MSN106	WORCB06106T	A9D61806	M6RCBD50630CAN	ADC906T
WOMCB6110	MX9MC110	MOD6110	MSN110	WORCB06110	MX9R3110	M6RCBD1030CAN	ADC910T
WOMCB6116	MX9MC116	MOD6116	MSN116	WORCB06110T	A9D61810	MOD6RCB011030A	ADC910T
WOMCB6120	MX9MC120	MOD6120	MSN120	WORCB06116	MX9R3116	M6RCBD1630CAN	ADC916T
WOMCB6125	MX9MC125	MOD6125	MSN125	WORCB06116T	A9D61816	MOD6RCB011630A	ADC916T
WOMCB6132	MX9MC132	MOD6132	MSN132	WORCB06120	MX9R3120	M6RCBD2030CAN	ADC920T
WOMCB6132R	Nil	Nil	MSN132B	WORCB06120T	A9D61820	MOD6RCB012030A	ADC920T
WOMCB6140	MX9MC140	MOD6140	MSN140	WORCB06125	MX9R3125	M6RCBD2530CAN	ADC925T
WOMCB6140R	Nil	Nil	MSN140R	WORCB06125T	A9D618325	MOD6RCB012530A	ADC925T
WOMCB6150	MX9MC150	MOD6150	MSN150	WORCB06132	MX9R3132	M6RCBD3230CAN	ADC932T
WOMCB6150R	Nil	Nil	Nil	WORCB06132T	A9D61832	MOD6RCB013230A	ADC932T
WOMCB6163	MX9MC163	MOD6163	MSN163	WOMSW180	Nil	MOD6MS180	Nil
WOMCB6163R	MX9MC163R	Nil	MSN163R	WOMSW1100	MX9MS1100	MOD6MS1100	Nil
WOMCB6310	MX9MC310	MOD6310	MSN310	WOMSW2100	MX9MS2100	MOD6MS2100	Nil
WOMCB6316	MX9MC316	MOD6316	MSN316	WOMSW380	Nil	Nil	Nil
WOMCB6320	MX9MC320	MOD6320	MSN320	WOMSW3100	MX9MS3100	MOD6MS3100	Nil
WOMCB6325	MX9MC325	MOD6325	MSN325	WORCD6220	Nil	MOD6RCCB22030A	CDA220T
WOMCB6332	MX9MC332	MOD6332	MSN332	WORCD6240	MX9RC240	MOD6RCCB24030A	CDA225T
WOMCB6332R	Nil	Nil	MSN332B	WORCD6263	A9R51263	MOD6RCCB26330A	CDA263T
WOMCB6340	MX9MC340	MOD6340	MSN340	WORCD6240	MX9RC240	MOD6RCCB24030A	CDA240T
WOMCB6340R	Nil	Nil	MSN340R	WORCD6440	MX9RC440	MOD6RCCB44030A	CDA440T
WOMCB6350	MX9MC350	MOD6350	MSN350	WORCD6263	MX9RC263	MOD6RCCB26330A	CDA463T
WOMCB6350R	Nil	Nil	Nil	WOSB12	RMXE112S	CSB12SW	VF112PT
WOMCB6363	MX9MC363	MOD6363	MSN363	WOSB18	RMXE118S	CSB18SW	VF118PT
WOMCB6363R	MX9MC363R	Nil	MSN363R	WOSB24	RMXE212S	CSB24SW	VF212PT
WORCB045110	RCBE210/30S	Nil	Nil	WOB BP18C			
WORCB045116	RCBE216/30S	Nil	Nil	WOB BF181			
WORCB045120	RCBE220/30S	Nil	Nil	WOB BF183			
WORCB045125	RCBE225/30S	Nil	Nil	WOSO AUDP10			
WORCB045132	RCBE232/30S	Nil	Nil	WOSO AUDP15			
				WONBPM7	L7	Nil	Nil



### 10 Year Manufacturer's Warranty

At Trader, we pride ourselves in providing high quality products backed by 100 years of Gerard knowledge and experience.

We design and manufacture all of our products to the highest standards giving homeowners and electricians peace of mind when they use a Trader product.



100 Years of Gerard Electrical Tradition

**1300 301 838**

[service@gsme.com.au](mailto:service@gsme.com.au)

[gsme.com.au](http://gsme.com.au)

